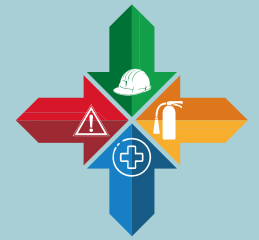
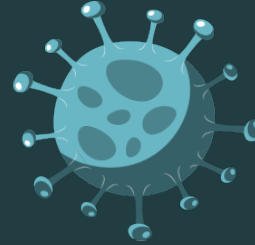


# HOW PREPARED ARE YOU IN YOUR WORKPLACE TO MANAGE THE COVID-19 PANDEMIC?

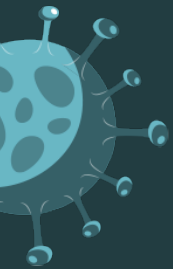
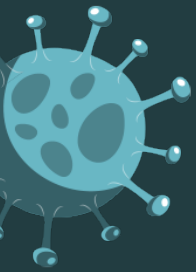
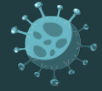


**SAFETY SOLUTION  
HUB**

Have you applied for an essential  
service status?



Are you prepared for the mandatory  
compliance that goes along with it?



## **WE'RE HERE TO HELP**

[www.safetysolutionhub.co.za](http://www.safetysolutionhub.co.za)

The Department of Labour have urged companies to put in place effective measures to mitigate against the COVID-19 pandemic. Most importantly to mitigate against the risks that employees face in their daily duties. Risk assessments and COVID-19 audits are more important than ever before in the workplace.

Safety Solution Hub are an essential service provider and is permitted to render services during the South African lock-down period. We have made it our mandate to ensure that every organisation is safe for operation. We have designed an Occupational Health Risk Assessment on Coronavirus management. We are also offering an "HR made easy" solution that will assist employers in complying with HR and Labour legislation.

## **BENEFITS OF THE SSH COVID-19 SOLUTION**

- **Mitigate the spread in the workplace**
- **Protect workers from the illness**
- **Reduce absenteeism**
- **Increase employee productivity**
- **Reduce cost to companies in COVID-19 management**
- **Comply with Department of Labour**
- **Comply with OHS legislation**

Should you be interested in receiving a quotation please email us on:

[dean@safetysolutionhub.co.za](mailto:dean@safetysolutionhub.co.za)

**082 665 3462**

[www.safetysolutionhub.co.za](http://www.safetysolutionhub.co.za)